

**Executive Vice President  
And Chief Financial Officer**

**Division of Campus Safety and Emergency Services**  
Office of the Senior Vice President  
and Chief Law Enforcement Officer

**Threat Assessment  
and Management Team**

**Executive Assistant /  
Director of Administration**

**DCSES**  
Admin. Asst.  
and Office Staff

**Technical Services /  
Security Consulting**  
Manager

**Public Information**  
PIO

**Parking and Transit  
Services**  
Director

**Risk Management  
& Regulatory  
Compliance  
Services**  
Director & Chief  
Compliance Officer

**Environmental  
Health and Safety  
Services**  
Director

**Law Enforcement &  
Community Policing**  
Associate Chief

**Department of  
Public Safety**  
Chief

**Access Control**  
Manager

**Parking & Transit  
Manager**

**Parking Services  
Asst. Manager**

**Parking  
Supervisors**

**Claims**  
Assc. Director

**Disability  
Coordinator**

**Risk &  
Insurance**  
Assc. Director

**Regulatory  
Compliance  
Coordinator**

**International Travel  
Safety and Support**

**Industrial  
Hygiene**  
Manager

**Hazardous Waste**  
Manager

**Environmental  
Compliance &  
Radiation  
Protection &  
Manager**

**Occupational  
Health**  
Manager

**Day Patrol  
and Events**  
Commander

**Night Patrol**  
Commander

**Crime Prevention  
& Investigations**  
Commander

**Student Safety  
Programs Unit**  
Manager

**Fire and Life Safety  
Services**  
Manager

**Fire Inspection  
and Response**  
Asst. Manager

**Food Safety  
& Sanitation**  
Asst. Manager

**Life Safety  
Compliance**  
Administrator

**Campus Safety and  
Law Enforcement  
Support Operations**  
Commander

**Emergency  
Communication Center**  
Manager

**Training/  
Recruitment**  
Sergeant

**Quartermaster**  
1st Sergeant

**Records  
Manager**

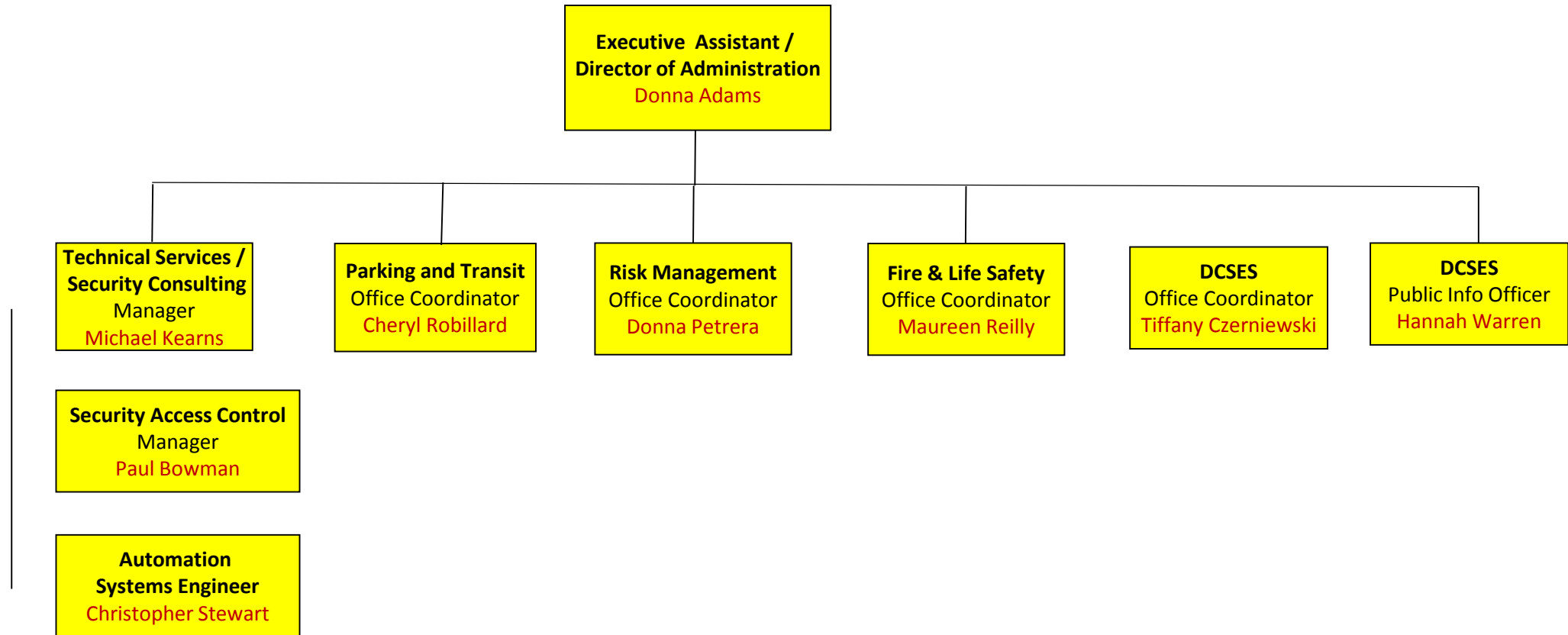
**Property & Evidence**  
Custodian/Officer

**Emergency  
Management /  
Business Continuity**  
Manager

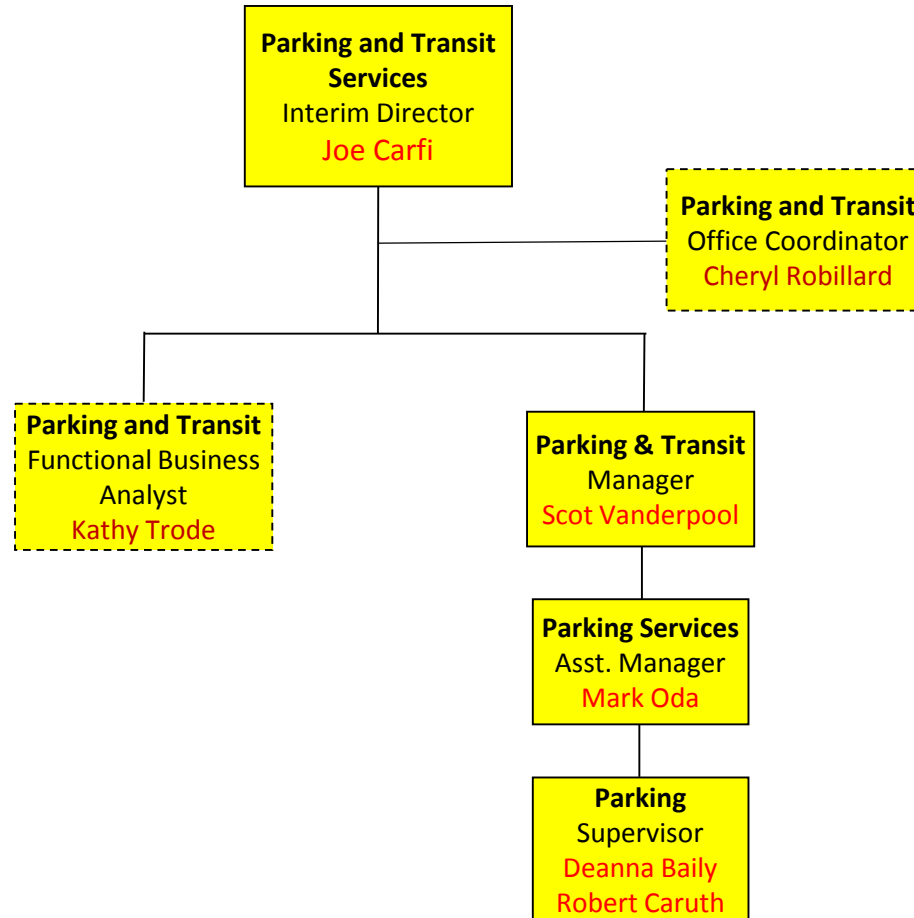
**R&D,  
Accreditation  
& Grants**  
Manager

**Accreditation**  
PT Assistants

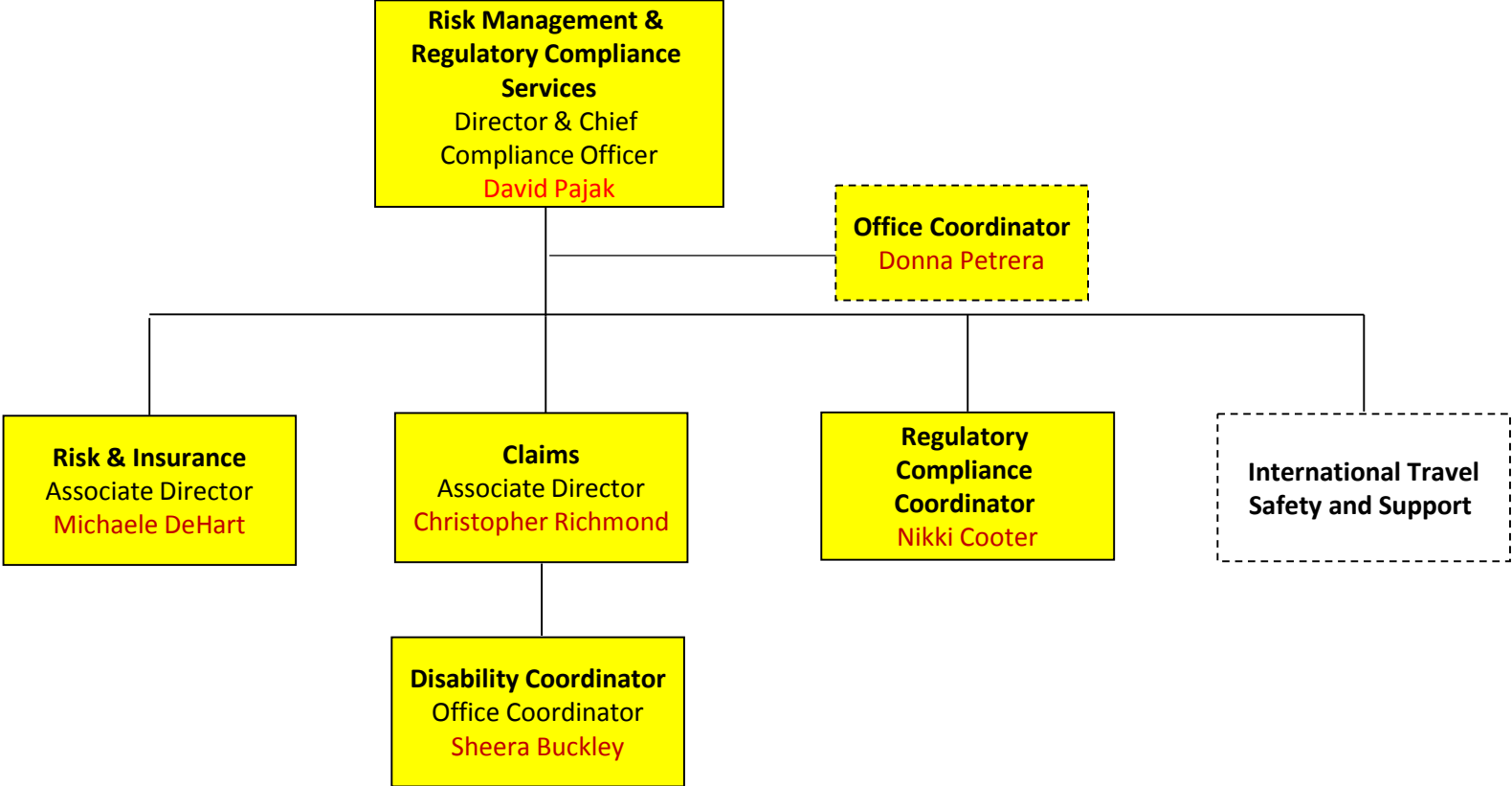
# Division of Campus Safety and Emergency Services Central Administrative Services



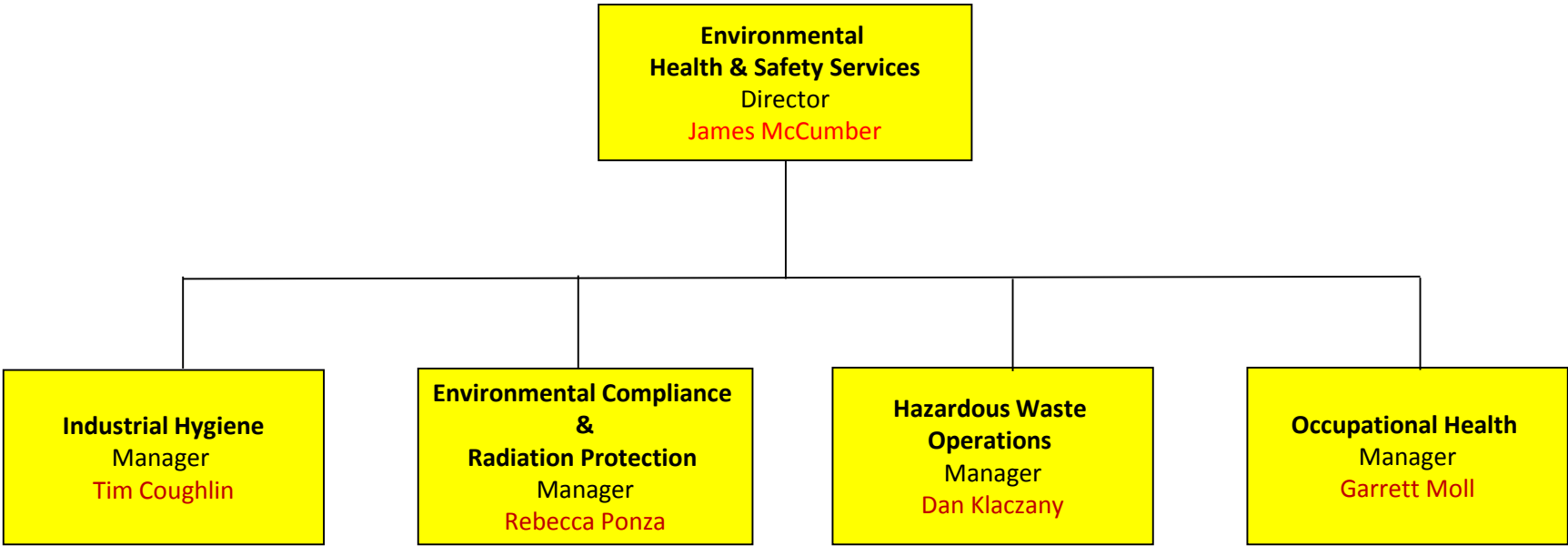
# Parking And Transit Services



# Risk Management and Regulatory Compliance Services



# Environmental Health and Safety Services



# Department of Public Safety

